

# WELLSPRING SUBDIVISION

## PROPOSED WELLSPRING SUBDIVISION PROJECT# HBY.010

### SARATOGA CITY STANDARD NOTES:

- CONTRACTOR SHALL FIELD VERIFY LOCATIONS AND INVERT ELEVATIONS OF EXISTING MANHOLES AND OTHER UTILITIES BEFORE STAKING OR CONSTRUCTING ANY NEW SEWER LINES.
- CONTRACTOR SHALL FIELD VERIFY LOCATIONS AND INVERT ELEVATIONS OF EXISTING STORM DRAIN STRUCTURES AND OTHER UTILITIES BEFORE STAKING OR CONSTRUCTING ANY NEW STORM DRAIN LINES.
- ALL CONSTRUCTION SHALL COMPLY WITH THE STANDARD TECHNICAL SPECIFICATIONS AND DRAWINGS FOR THE CITY OF SARATOGA SPRINGS, UTAH.
- EXISTING UTILITIES HAVE BEEN NOTED TO THE BEST OF ENGINEERS KNOWLEDGE. HOWEVER IT IS OWNER'S AND CONTRACTOR'S RESPONSIBILITY TO LOCATE UTILITIES IN FIELD AND NOTIFY CITY ENGINEER AND CITY IF DISCREPANCIES EXIST PRIOR TO CONTINUING ANY CONSTRUCTION.
- POST-ACCEPTANCE ALTERATIONS TO LIGHTING PLANS OR INTENDED LIGHTING EQUIPMENT SHALL BE SUBMITTED TO THE CITY FOR REVIEW AND ACCEPTANCE.
- THE CITY RESERVES THE RIGHT TO CONDUCT POST-INSTALLATION INSPECTIONS TO VERIFY COMPLIANCE WITH THE CITY'S REQUIREMENTS AND ACCEPTED LIGHTING PLAN COMMITMENTS, AND IF DEEMED APPROPRIATE BY THE CITY, TO REQUIRE REMEDIAL ACTION AT NO EXPENSE TO THE CITY.
- ALL EXTERIOR LIGHTING SHALL MEET IESNA FULL-CUT-OFF CRITERIA.

### PROJECT DATA TABLE:

TOTAL AREA OVERALL:	26,697.65 S.F.	6.08 A.C.
TOTAL INTERLUDES AREA:	65,113.07 S.F.	1.28 A.C.
TOTAL LOT AREA:	194,639.20 S.F.	4.47 A.C.
TOTAL LANDSCAPE AREA:	152,755.66 S.F.	0.35 A.C.
TOTAL R.O.W. AREA:	70,389.43 S.F.	1.62 A.C.
TOTAL NUMBER OF LOTS:	15	

SHEET INDEX	
	COVER SHEET
	INDEX AND LEGEND
G.101	GENERAL NOTES
G.102	EXISTING SITE AND DEMOLITION PLAN
C.101	PROPOSED SITE AND HORIZONTAL CONTROL PLAN
C.201	UTILITY PLAN
C.301	GRADING AND DRAINAGE PLAN
C.401	PLAN & PROFILE STA. 19+00 TO 14+50
C.402	PLAN & PROFILE STA. 14+50 TO 20+00
C.403	PLAN & PROFILE STA. 20+00 TO 25+34
C.404	PLAN & PROFILE STA. 26+00 TO 54+75
LP.101	LIGHTING PLAN
D.101	DETAILS
D.102	DETAILS
D.103	DETAILS
D.104	DETAILS
D.105	DETAILS
D.106	DETAILS

WELLSPRING SUBDIVISION  
HBY.010.18



VICINITY MAP



## LOCATION: SARATOGA SPRINGS, UTAH COUNTY, UTAH

### CONTACT INFORMATION

AGENCY	NUMBER	CONTACT	ADDRESS
OWNER/DEVELOPER	801-668-9663	JOSEPH TURLEY	JOSEPH@JOSEPHTURLEY.COM
ENGINEER	801-571-9414	GILSON ENGINEERING	12401 S. 4500 E. BLDG. C UNIT 2, DRAPER, UTAH 84020
CITY OF SARATOGA SPRINGS	801-786-9793	PLANNING DIRECTOR: DAVID STROUD	1307 N. COMMERCE DRIVE SUIT 200 SARATOGA SPRINGS, UT 84045
CITY OF SARATOGA SPRINGS	801-786-9793	CITY ENGINEER: GORDON MINER	1307 N. COMMERCE DRIVE SUIT 200 SARATOGA SPRINGS, UT 84045



12401 SOUTH 4500 EAST BUILDING C, UNIT 2, DRAPER, UT 84020  
PHONE: (801) 571-9414 FAX: (801) 571-9449



SCALE MEMBERSHIP ON FULL SIZE SHEET

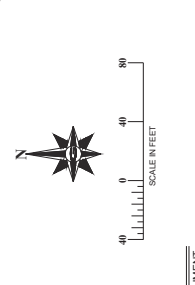
SCALE MEMBERSHIP ON FULL SIZE SHEET

SCALE MEMBERSHIP ON FULL SIZE SHEET

PROPOSED SITE & HORIZONTAL CONTROL PLAN  
 WELLSPRING SUBDIVISION  
 SARATOGA SPRINGS, UTAH  
 UTAH COUNTY, UTAH

DATE: MAY 2019  
 DRAWN BY: JMM  
 CHECKED BY: JMM  
 APPROVED BY: JMM

C-102



ESTIMATED QUANTITIES

ROADWAY	DESCRIPTION	UNITS
ROADWAY	PAVING AND BASE COURSE	4225.97
	PAVING AND CURB (C&G)	1425.97
	PAVING AND GUTTER (C&G)	1425.97
	PAVING AND GUTTER (C&G)	1425.97
	PAVING AND GUTTER (C&G)	1425.97
	PAVING AND GUTTER (C&G)	1425.97
	PAVING AND GUTTER (C&G)	1425.97
	PAVING AND GUTTER (C&G)	1425.97
	PAVING AND GUTTER (C&G)	1425.97
	PAVING AND GUTTER (C&G)	1425.97

Line Table

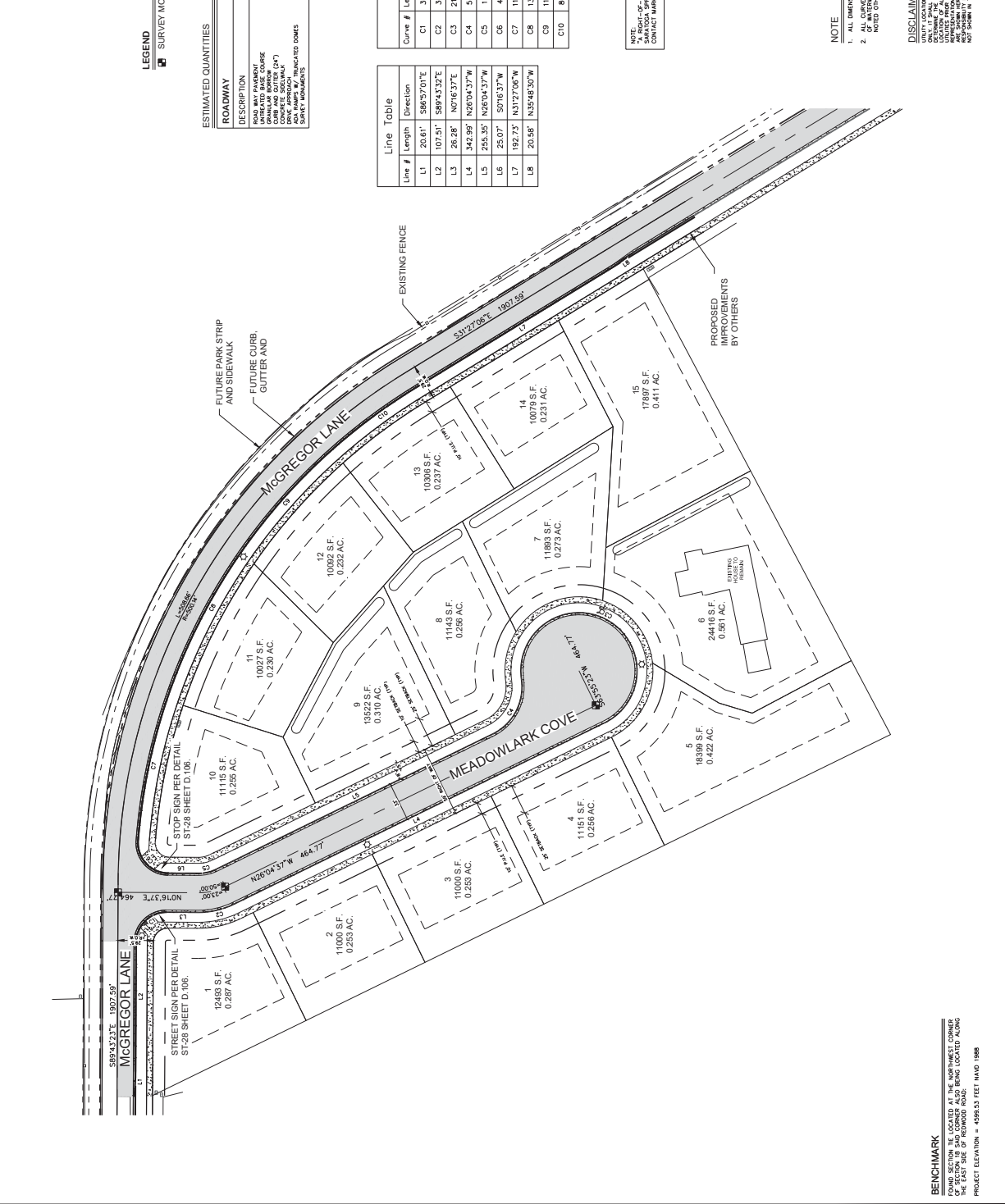
Line #	Length	Direction
L1	20.61'	S89°37'07"E
L2	107.51'	S89°43'32"E
L3	26.28'	N0°16'37"E
L4	342.99'	N28°04'37"W
L5	255.35'	N28°04'37"W
L6	25.07'	S0°16'37"W
L7	192.73'	N37°27'06"W
L8	20.58'	N35°48'30"W

Curve Table

Curve #	Length	Radius	Delta	Chord Direction	Chord Length
C1	39.27'	25.01'	89°36'16"	N44°2'56"W	35.36'
C2	30.59'	66.50'	26°21'14"	S17°54'00"E	30.32'
C3	213.55'	48.50'	25°21'52"	N27°46'57"E	78.33'
C4	54.88'	43.50'	72°16'52"	S62°13'03"E	51.31'
C5	15.41'	33.50'	26°21'14"	S17°54'00"E	15.27'
C6	41.16'	25.03'	84°11'35"	S47°27'21"W	36.68'
C7	119.34'	484.33'	14°07'02"	N79°29'36"W	118.03'
C8	115.38'	485.40'	13°37'08"	N63°24'25"W	115.10'
C9	86.96'	485.18'	10°16'11"	N36°39'31"W	86.85'

NOTE:  
 1. ALL DIMENSIONS ARE TO BACK OF CURB UNLESS OTHERWISE NOTED.  
 2. ALL CURB AND LINE TABLE DIMENSIONS ARE BACK OF CURB UNLESS OTHERWISE NOTED.

DISCLAIMER NOTE  
 THE INFORMATION CONTAINED HEREIN IS FOR YOUR INFORMATION ONLY. THE CONTRACTOR SHALL BE RESPONSIBLE FOR VERIFYING THE LOCATION OF ALL UTILITIES AND OVERHEAD LINES. THE CONTRACTOR SHALL BE RESPONSIBLE FOR VERIFYING THE LOCATION OF ALL UTILITIES AND OVERHEAD LINES. THE CONTRACTOR SHALL BE RESPONSIBLE FOR VERIFYING THE LOCATION OF ALL UTILITIES AND OVERHEAD LINES. THE CONTRACTOR SHALL BE RESPONSIBLE FOR VERIFYING THE LOCATION OF ALL UTILITIES AND OVERHEAD LINES.



BENCHMARK  
 PROJECT ELEVATION = 4999.53 FEET NAVD 1985