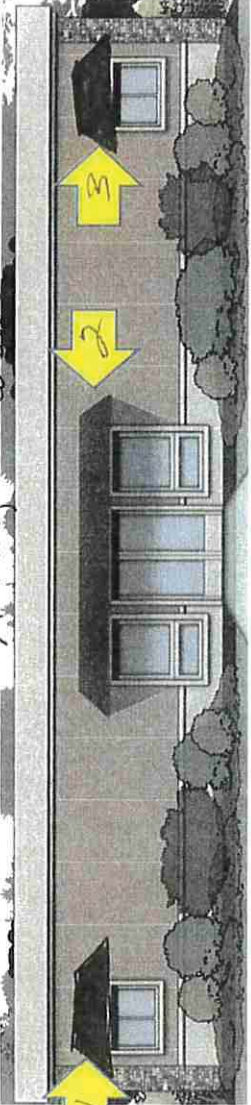


General Drawings, Conn
Awnings measurements

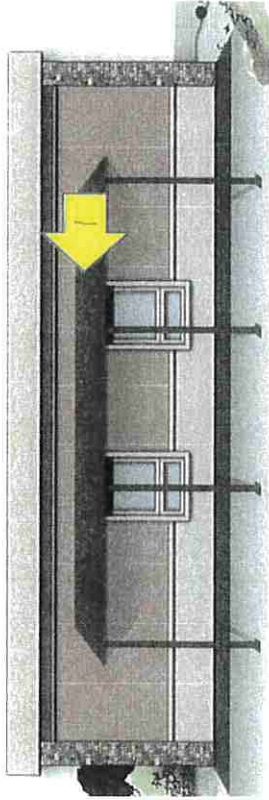


Front East View



copper
3 Awnings
over
doors/
windows
1 + 2
Height 54" width
36" 48" Projection

Side North View

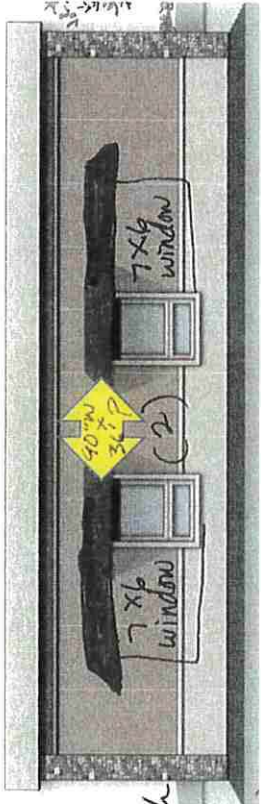


2
Height 180" width
36" 60" Projection

→ 1 Aluminum Awning
20' width
10' Projection

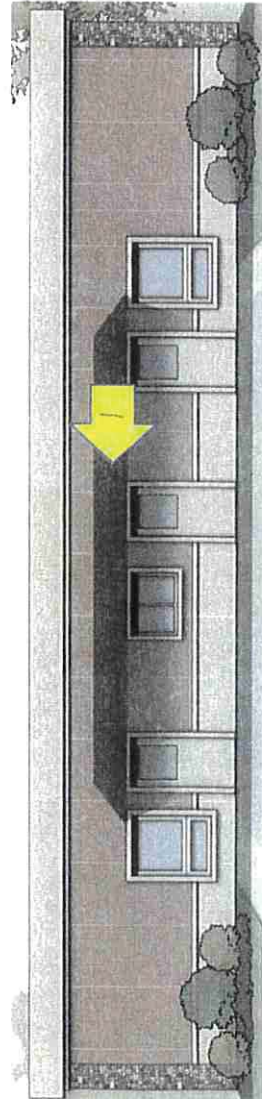


Street orientation
Side South
View



copper
2 Awnings
over
windows
90" width each
48" Projection
Height
36"

Back West View



one long copper
awning
over
doors
216" width
36" 60" Projection

"Height" of copper Awnings could be Higher or lower if needed.

