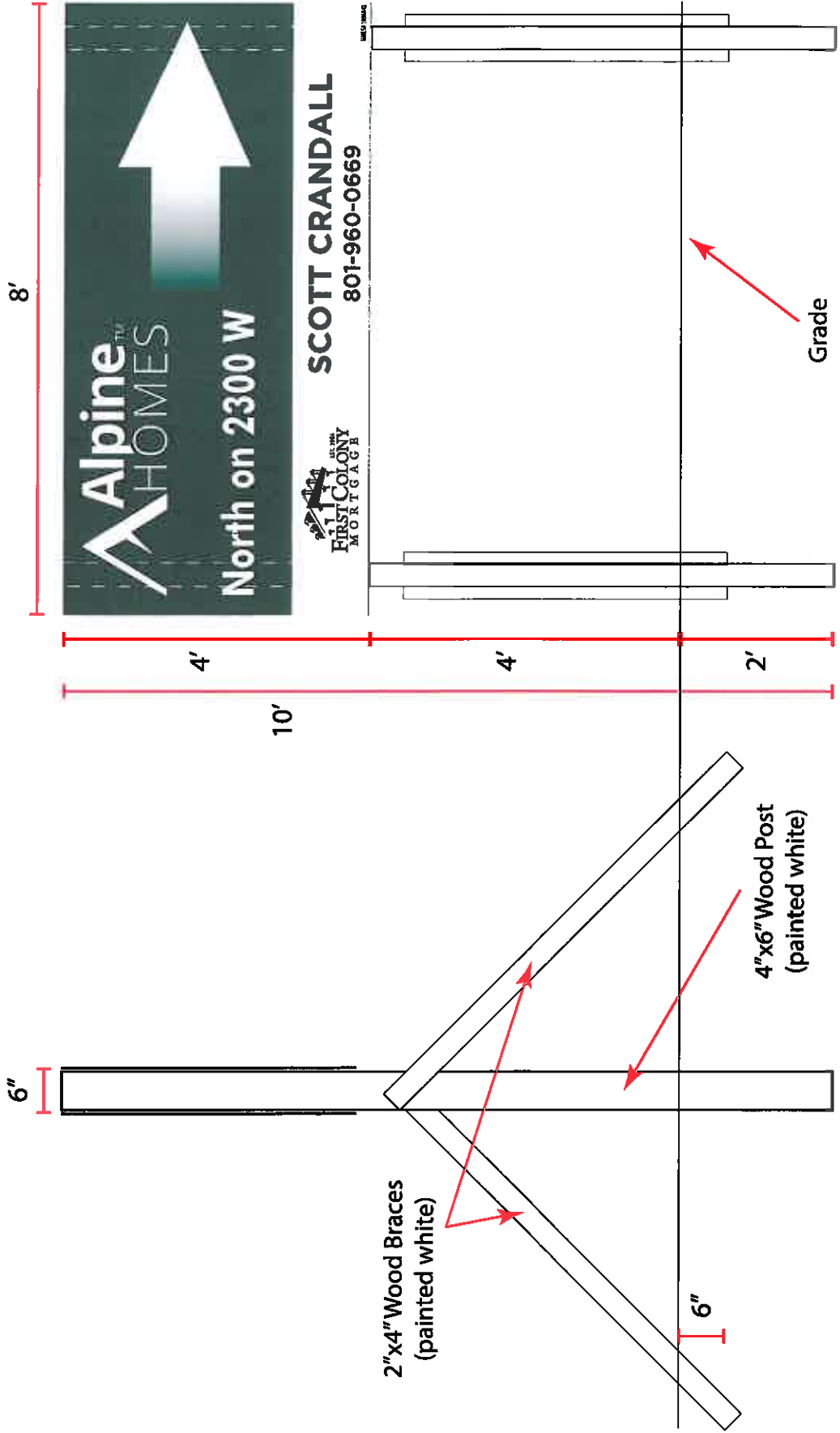
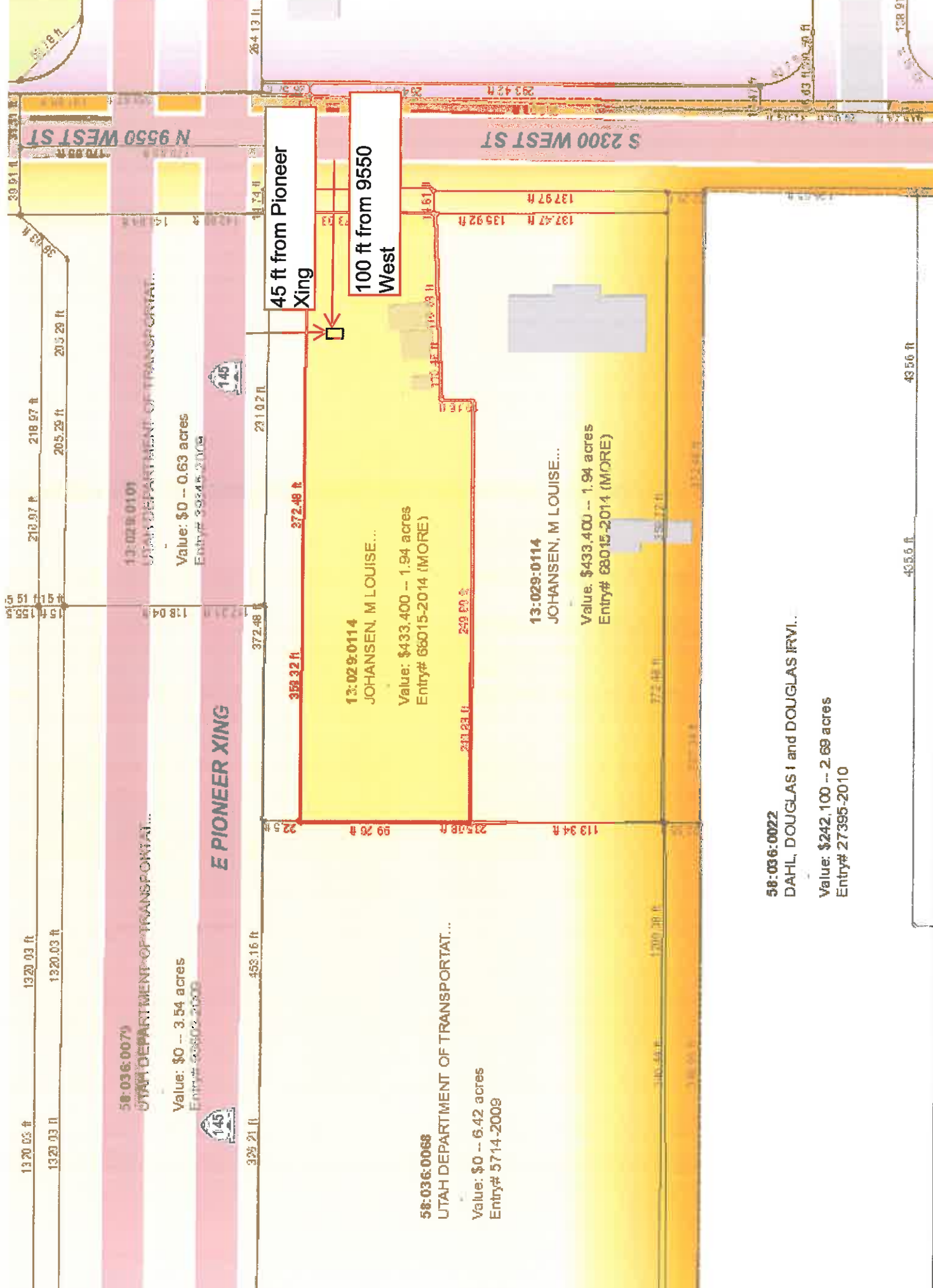


- Materials:**
- Panels - 6mm ACM
  - Posts - 4"x6" x14' wood
  - Braces - 2"x4" x8' wood





58-036-0075  
UTAH DEPARTMENT OF TRANSPORTATION

Value: \$0 -- 3.54 acres  
Entry# 68500-2000



325.21 ft 453.16 ft

**E PIONEER XING**

13-029-0101  
UTAH DEPARTMENT OF TRANSPORTATION

Value: \$0 -- 0.63 acres  
Entry# 39245-2008



372.48 ft 211.02 ft

45 ft from Pioneer Xing

13-029-0114  
JOHANSEN, M LOUISE...  
Value: \$433,400 -- 1.94 acres  
Entry# 68015-2014 (MORE)

100 ft from 9550 West

13-029-0114  
JOHANSEN, M LOUISE...  
Value: \$433,400 -- 1.94 acres  
Entry# 68015-2014 (MORE)

58-036-0068  
UTAH DEPARTMENT OF TRANSPORTATION...  
Value: \$0 -- 6.42 acres  
Entry# 5714-2009

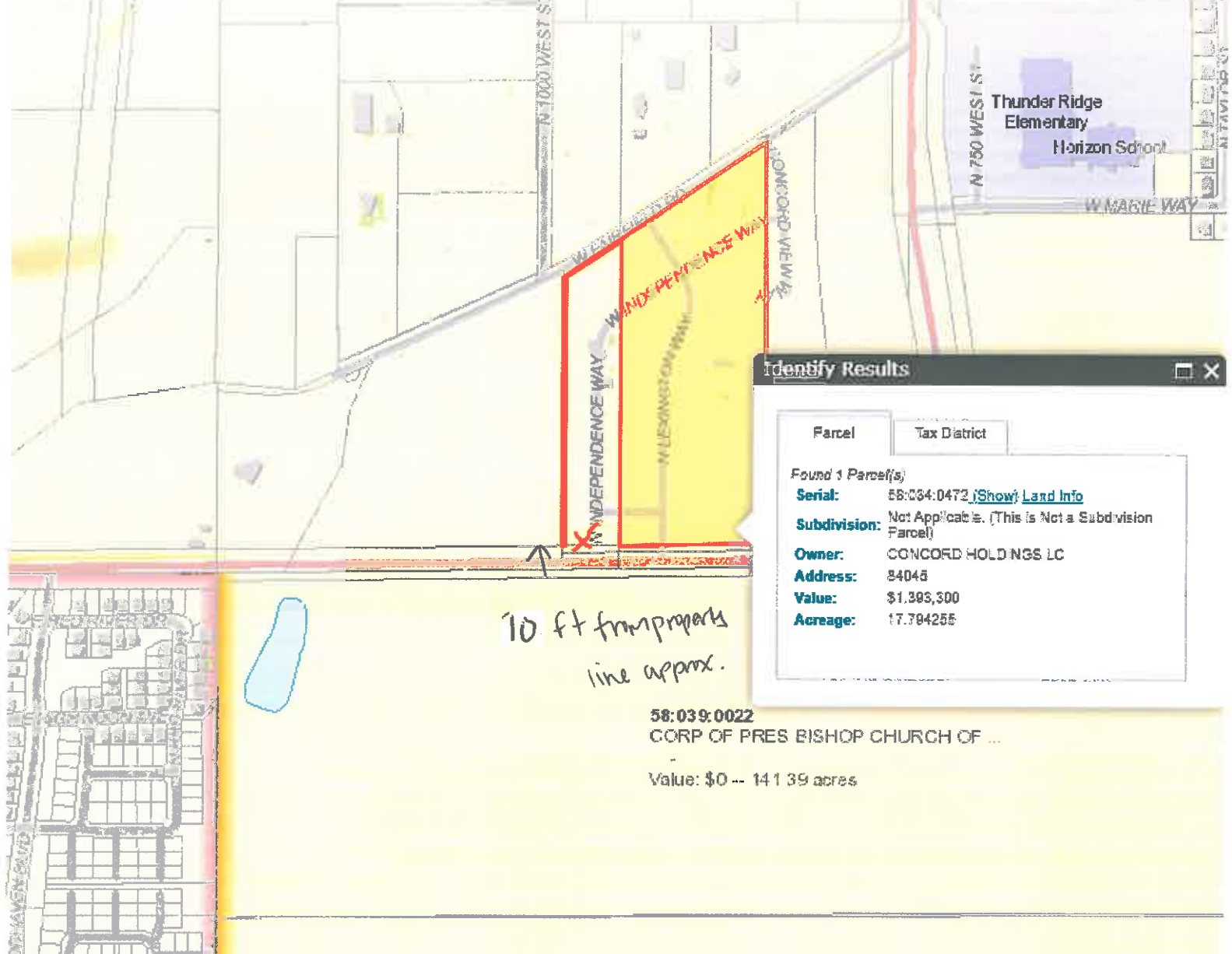
58-036-0022  
DAHL, DOUGLAS I and DOUGLAS IRVING...  
Value: \$242,100 -- 2.69 acres  
Entry# 27395-2010

# Utah County Parcel Map

This cadastral map is generated from Utah County Recorder data. It is for reference only and no liability is assumed for any inaccuracies, incorrect data or variations with an actual survey



Date: 6/12/2019



Identify Results

Parcel	Tax District
Found 1 Parcel(s)	
<b>Serial:</b>	58:034:0472 ( <a href="#">Show Land Info</a> )
<b>Subdivision:</b>	Not Applicable. (This is Not a Subdivision Parcel)
<b>Owner:</b>	CONCORD HOLDINGS LC
<b>Address:</b>	84045
<b>Value:</b>	\$1,393,300
<b>Acreage:</b>	17.794255

58:039:0022  
 CORP OF PRES BISHOP CHURCH OF ...  
 Value: \$0 -- 141.39 acres