

SITE TABULATIONS	
% BUILDABLE LAND	79%
% OPEN SPACE	21%
BUILDING AREA	26,113 SQ. FT.
OPEN SPACE AREA	36,314 SQ. FT.
TOTAL PROJECT AREA	3.93 ACRES

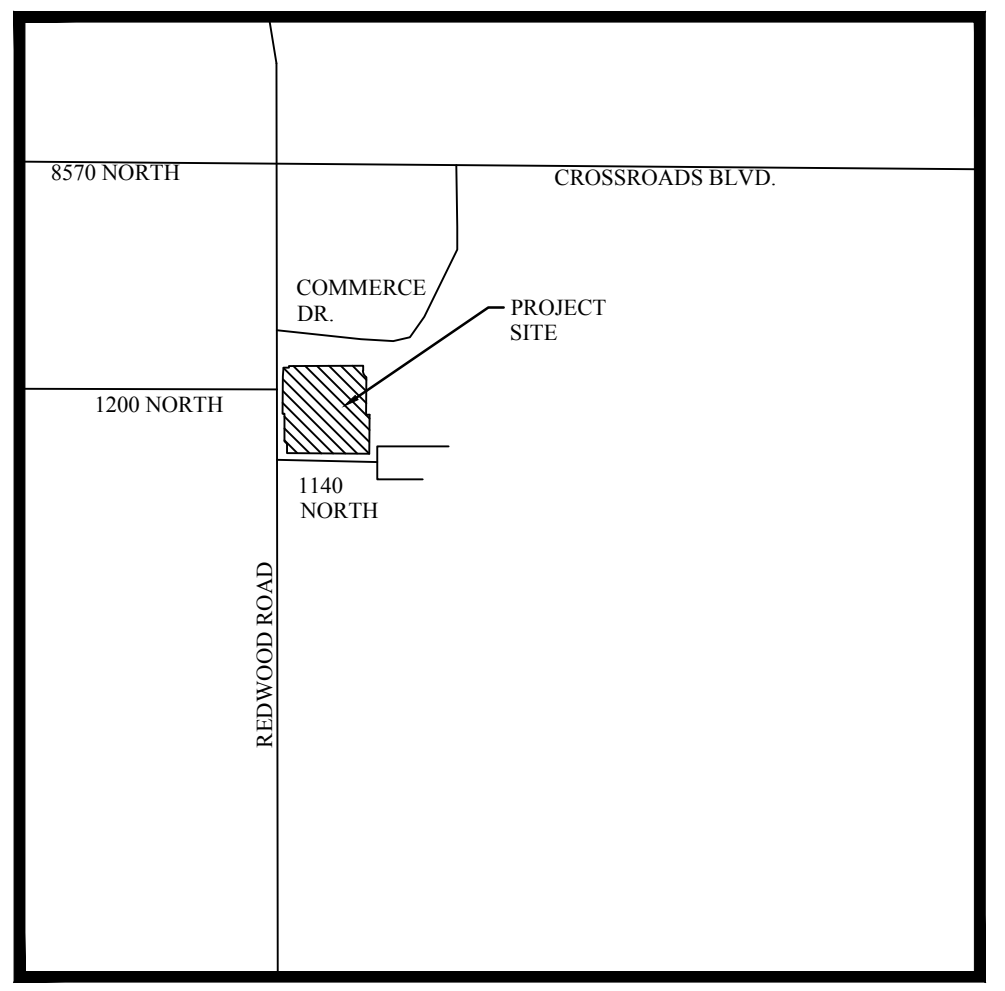
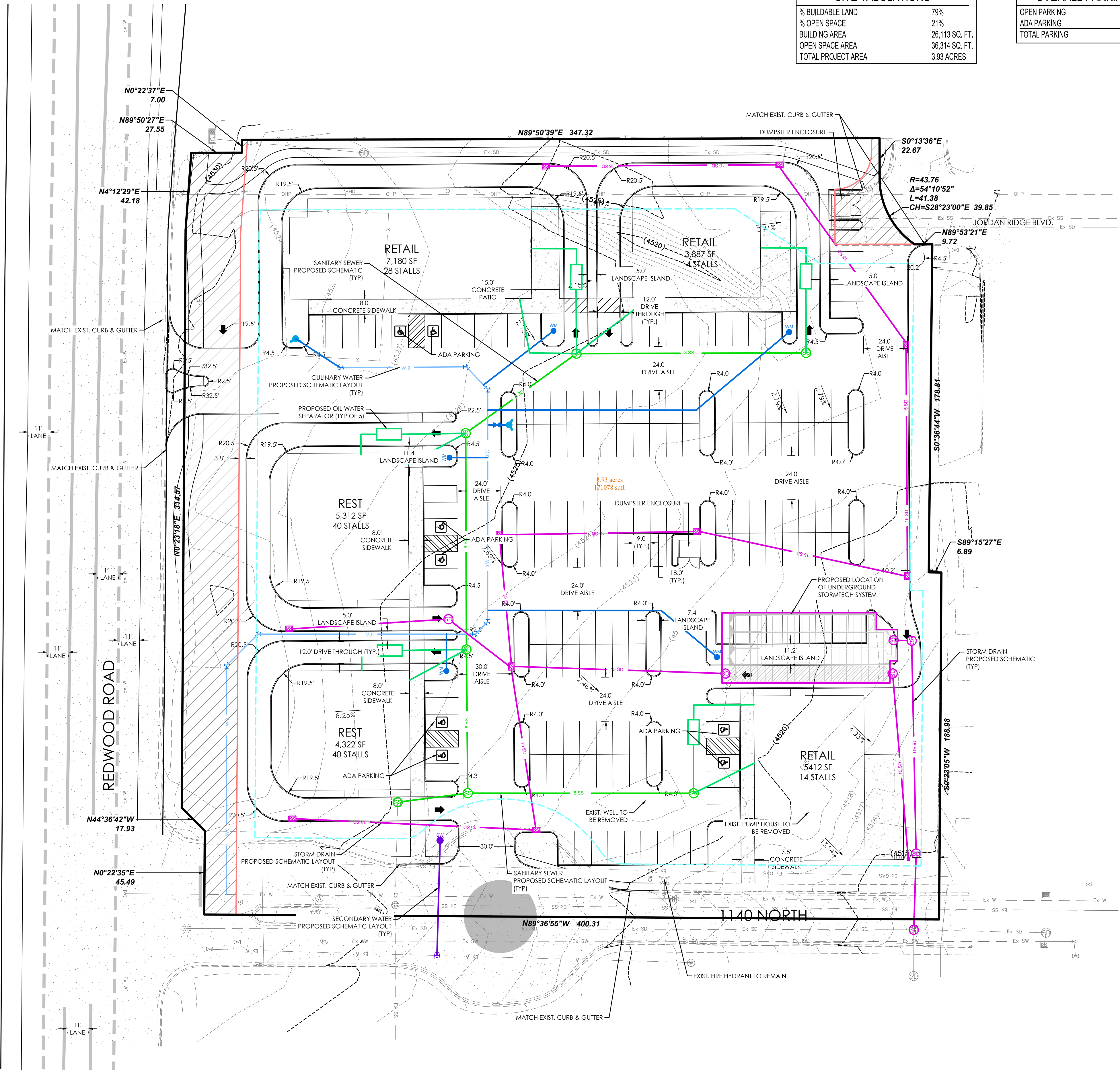
OVERALL PARKING COUNT	
OPEN PARKING	166 STALLS
ADA PARKING	8 STALLS
TOTAL PARKING	184 STALLS

**LEGEND**

	BOUNDARY
	ROW
	CENTERLINE
	LOT LINE
	EASEMENT
	15" STORM DRAIN
	8" SANITARY SEWER
	8" CULINARY WATER
	8" SECONDARY WATER
	CONTOUR MAJOR
	CONTOUR MINOR
	EXIST. STORM DRAIN
	EXIST. SANITARY SEWER
	EXIST. CULINARY WATER
	EXIST. FENCE
	EXIST. CONTOUR MAJOR
	EXIST. CONTOUR MINOR
	SIGN
	STREET LIGHT
	SD MH, INLET, AND COMBO
	SEWER MANHOLE
	CULINARY VALVE, TEE & BEND
	SECONDARY VALVE, TEE & BEND
	WATER BLOW-OFF
	FIRE HYDRANT
	STREET MONUMENT (TO BE SET)
	EXIST. STREET MONUMENT
	EXIST. SD INLET & MH
	EXIST. SEWER MH
	EXIST. VALVE, TEE, & BEND
	EXIST. FIRE HYDRANT
	SPOT ELEVATION



FOR REVIEW ONLY



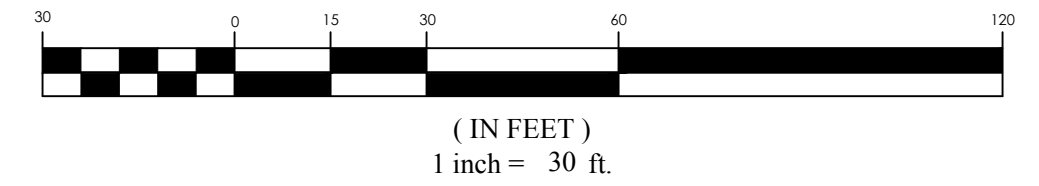
VICINITY MAP  
N.T.S.

**NOTES:**

1. ALL RADII DIMENSIONS ARE GIVEN AT TBC (TOP BACK OF CURB).
2. ALL DRIVE ISLE AND ACCESS DIMENSIONS ARE GIVEN FROM FACE OF CURB TO FACE OF CURB



GRAPHIC SCALE



THE POINT AT SARATOGA SPRINGS  
SARATOGA SPRINGS, UTAH  
SITE PLAN CONCEPT

REVISION BLOCK	
#	DESCRIPTION
1	
2	
3	
4	
5	
6	

SITE PLAN CONCEPT	
Scale: 1"=30'	Drawn: SGA
Date: 09/29/20	Job #: 20-0359
Sheet:	

Z:\\_2020\20-0359 The Point @ Saratoga\design\20-0359\dwg\concepts\C3- SITE PLAN concept.dwg