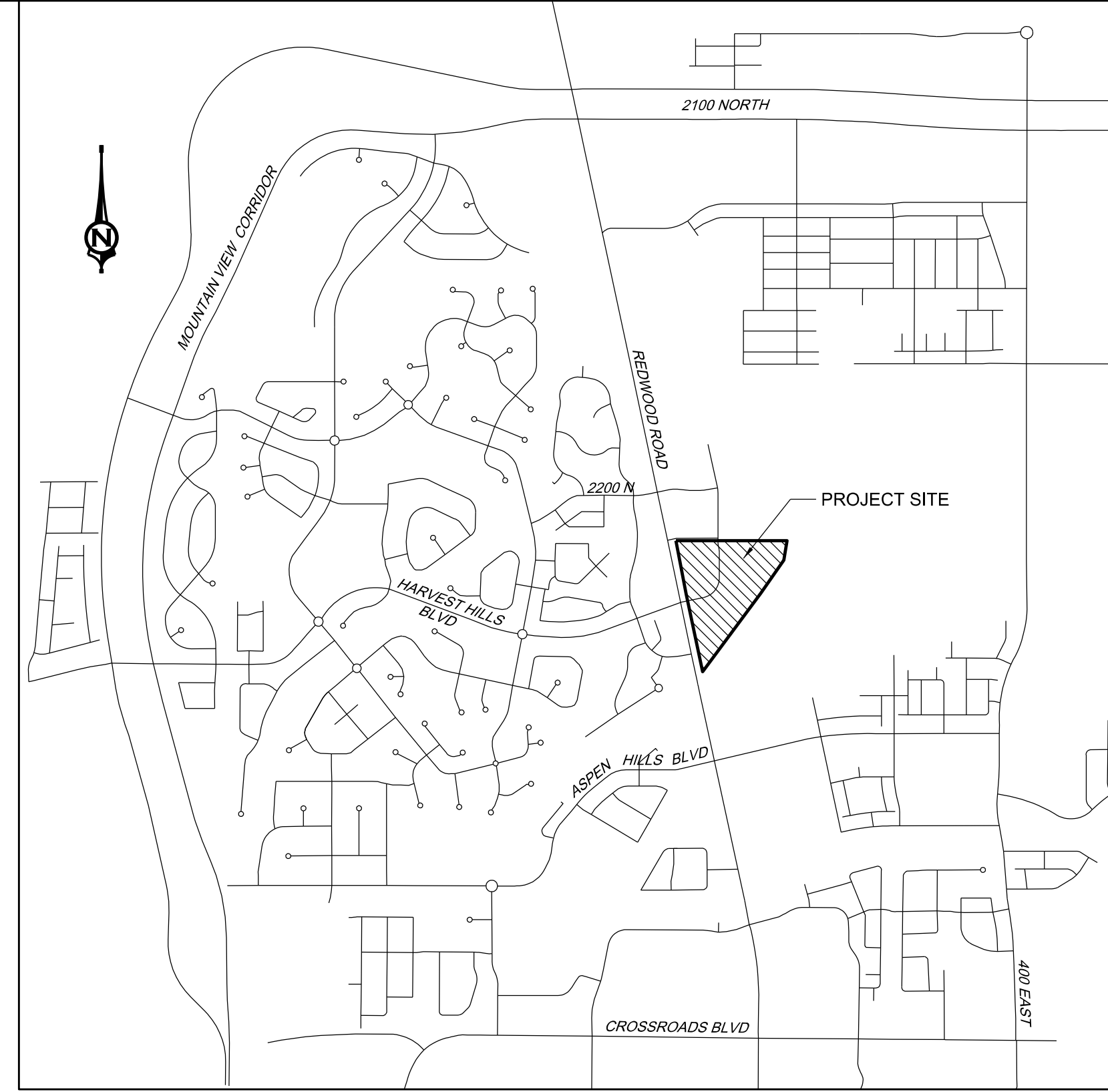
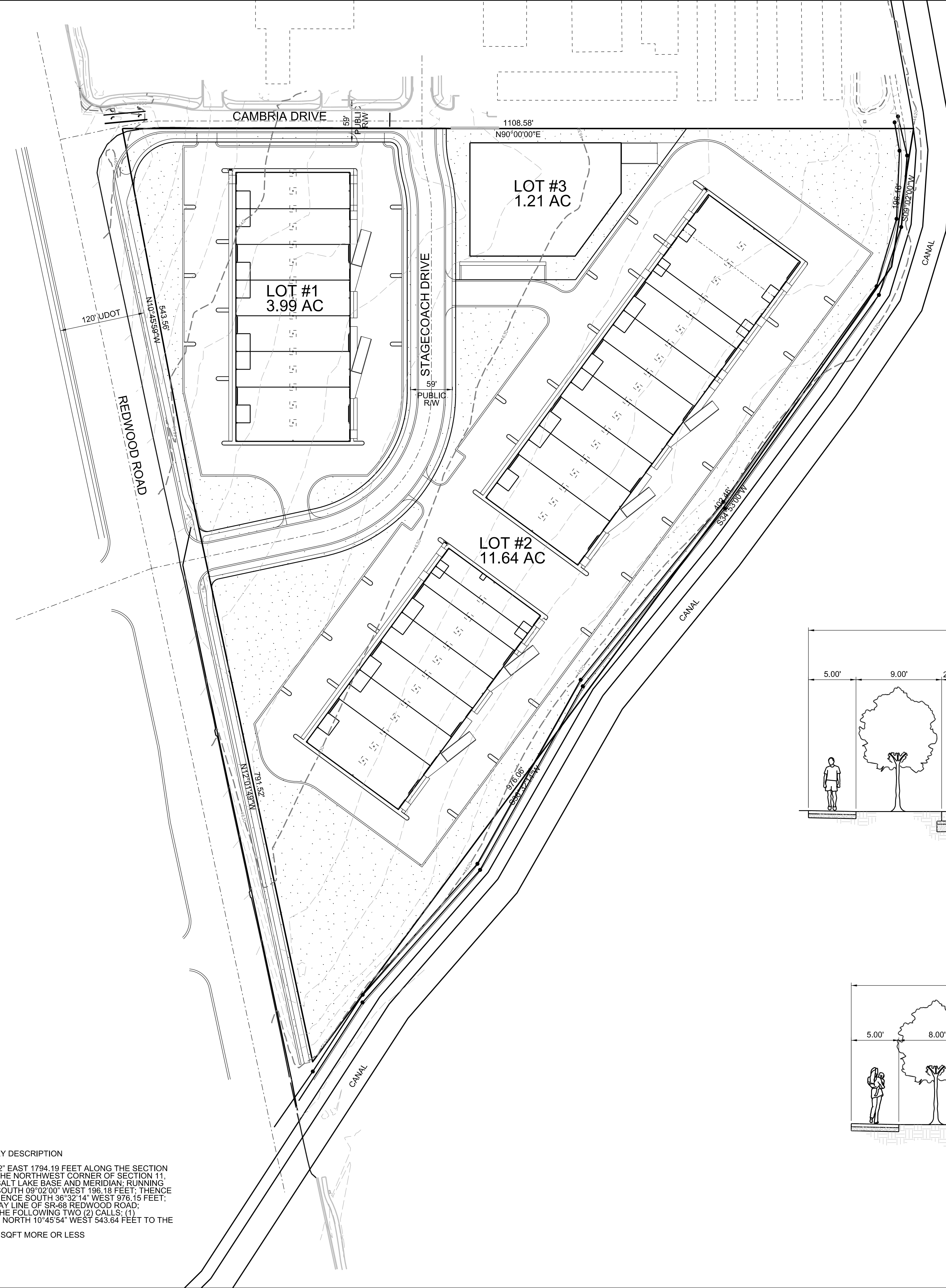


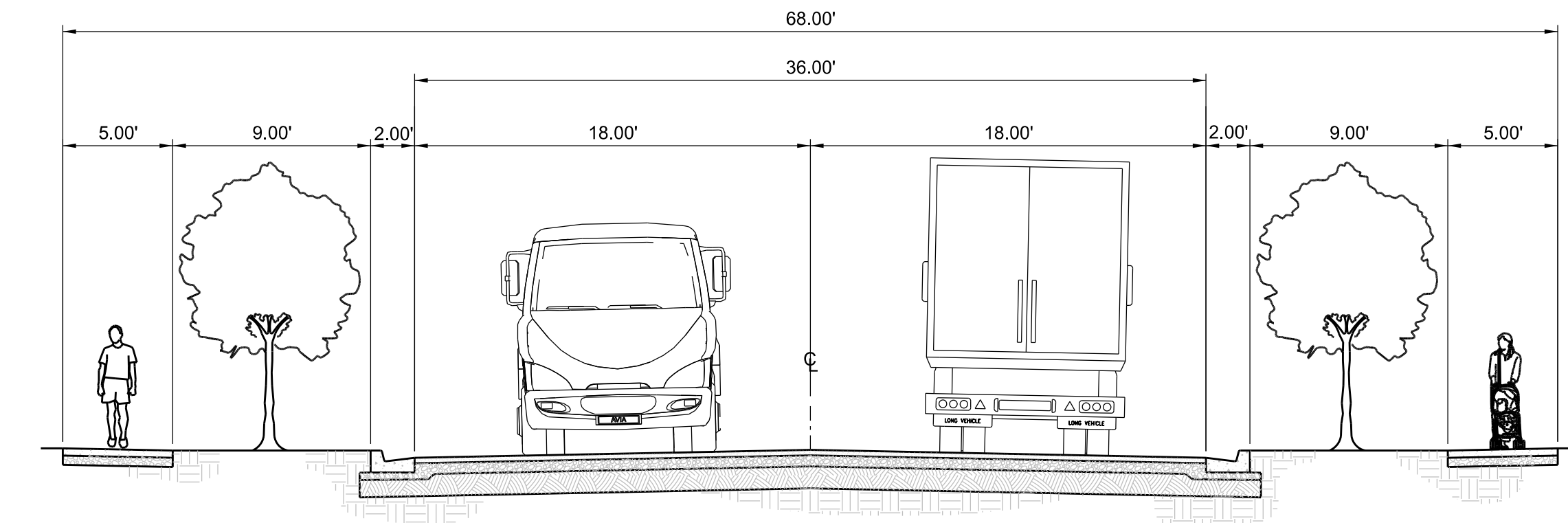
DRAWING REUSE STATEMENT  
THIS DOCUMENT AND THE INFORMATION CONTAINED HEREIN ARE THE PROPERTY OF MUSTANG DESIGN, LLC. NO PART OF THIS DOCUMENT OR THE INFORMATION CONTAINED HEREIN MAY BE REPRODUCED OR TRANSMITTED IN ANY FORM OR BY ANY MEANS, ELECTRONIC OR MECHANICAL, INCLUDING PHOTOCOPYING, RECORDING, OR BY ANY INFORMATION STORAGE AND RETRIEVAL SYSTEM, WITHOUT THE WRITTEN PERMISSION OF MUSTANG DESIGN, LLC.

NO.	DESCRIPTION	BY	DATE

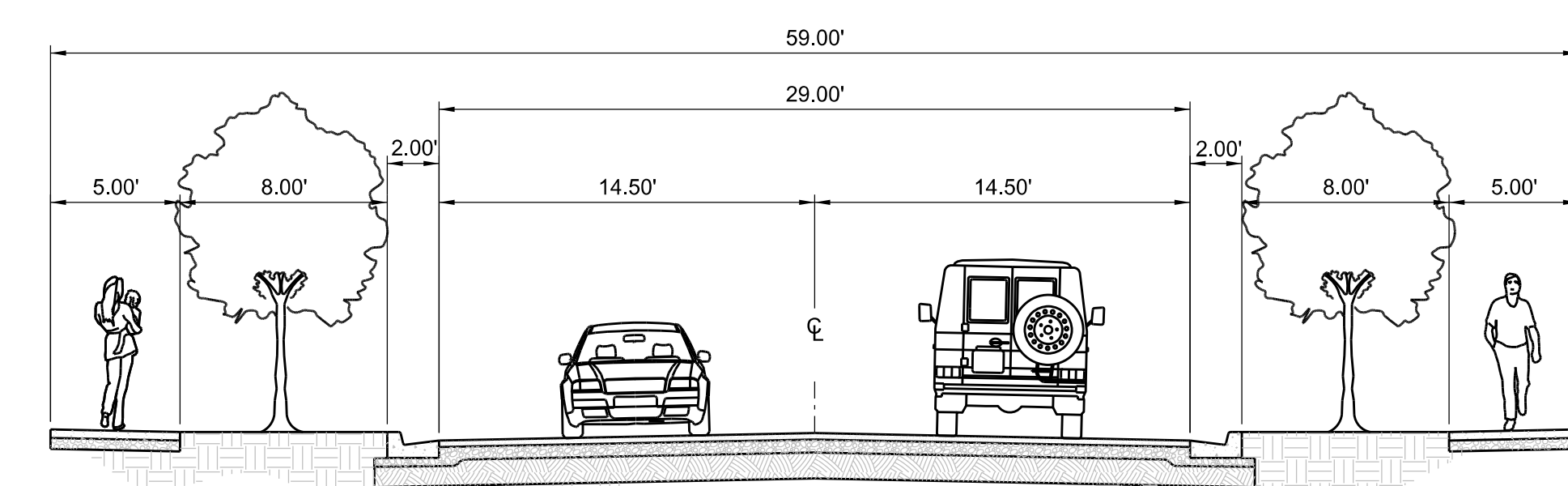
WESTPORT BUSINESS PARK  
CONCEPT PLAN  
A OFFICE WAREHOUSE COMMERCIAL CENTER  
SARATOGA SPRINGS, UTAH



VICINITY MAP



STAGECOACH DRIVE CROSS-SECTION  
(TYPICAL SECTION UNLESS NOTED OTHERWISE)  
SLOPES AND UTILITY LOCATIONS MAY VARY DUE TO ROAD CURVATURE



CAMBRIA DRIVE CROSS-SECTION  
(TYPICAL SECTION UNLESS NOTED OTHERWISE)

WESTPORT BUSINESS PARK BOUNDARY DESCRIPTION  
BEGINNING AT A POINT NORTH 89°55'02" EAST 1794.19 FEET ALONG THE SECTION LINE AND SOUTH 1734.26 FEET FROM THE NORTHWEST CORNER OF SECTION 11, TOWNSHIP 5 SOUTH, RANGE 1 WEST, SALT LAKE BASE AND MERIDIAN; RUNNING THENCE EAST 1108.61 FEET; THENCE SOUTH 09°02'00" WEST 196.18 FEET; THENCE SOUTH 34°53'00" WEST 402.46 FEET; THENCE SOUTH 36°32'14" WEST 976.15 FEET; TO A POINT ON THE EAST RIGHT-OF-WAY LINE OF SR-68 REDWOOD ROAD; THENCE ALONG SAID RIGHT-OF-WAY THE FOLLOWING TWO (2) CALLS: (1) NORTH 12°01'41" WEST 781.51 FEET; (2) NORTH 10°45'54" WEST 543.64 FEET TO THE POINT OF BEGINNING.  
CONTAINING 18.296 ACRES OR 796,983 SQFT MORE OR LESS

