

Legends Boxing

1509 N Commerce Drive, Suite 100
Saratoga Springs, UT 84045

Channel Letters - Stud Mounted on Aluminum Backer Pan

Quantity: 3

Trim: 1" Black Gemtrim

Return Color: Black

Face: 1/8" White Acrylic w/ Applied Vinyl

Vinyl Color: Blue - To Match PMS 915 C

Letter Interior: Gloss White

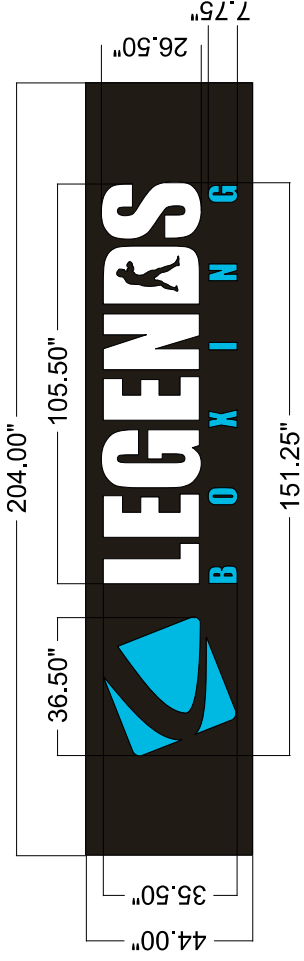
Internal Illumination: White LED's

Backer Pan: 2" Deep 0.125 Extruded Aluminum Painted to Match Brackets on Facade

Mounting: Onto Existing Brackets

Sq. Ft. Signage: 62.33

Sq. Ft. Allowance: TBD



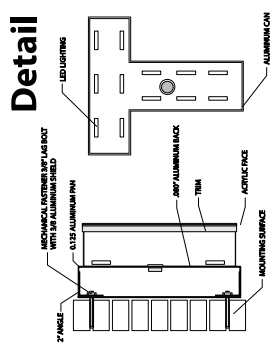
SUPERIMPOSED VIEW- FRONT ELEVATION



SUPERIMPOSED VIEW-BACK ELEVATION



SIMULATED NIGHT VIEW



Detail

Claude Ballbe	claude@signsunlimitedusa.com
919-552-8689	www.signsunlimitedusa.com
11/20/20	UL Underwriters Laboratories Inc.® UL File #E22870

Approval Signature:

Please check all spelling, quantities, colors, and materials before approving

NEED SURVEY TO CONFIRM SCALE PRIOR TO MANUFACTURE

Notes:

SIGNS:UNLIMITED
communicate your identity

6801 Mount Hermon Church Rd, Building C
Durham, NC 27705

©COPYRIGHT NOTICE: Signs Unlimited expressly reserves its common law copyright and other property rights in these drawings. These drawings are not to be reproduced, changed or copied in any form or manner without written expressed permission from Signs Unlimited or its affiliates.

Legends Boxing

1509 N Commerce Drive, Suite 100
Saratoga Springs, UT 84045

Channel Letters - Stud Mounted on Aluminum Backer Pan

Quantity: 3

Trim:
1" Black Gemtrim

Return Color:
Black

Face:
1/8" White Acrylic w/ Applied Vinyl

Vinyl Color:
Blue - To Match PMS 915 C

Letter Interior:
Gloss White

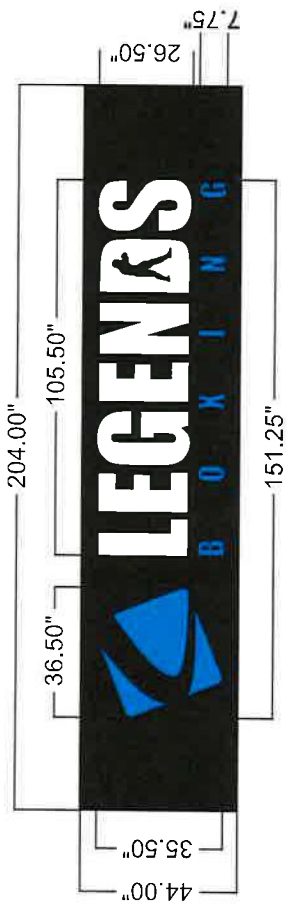
Internal Illumination:
White LED's

Backer Pan:
2" Deep 0.125 Extruded Aluminum
Painted to Match Brackets on Facade

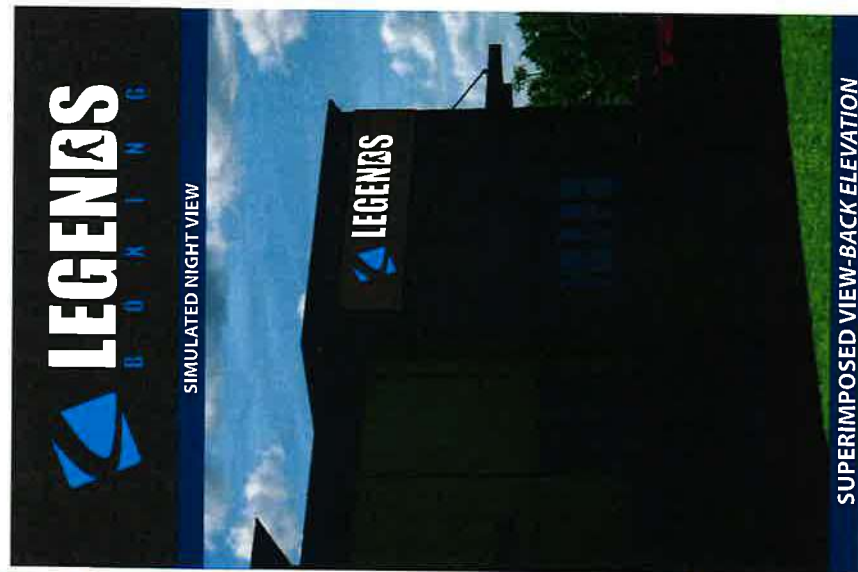
Mounting:
Onto Existing Brackets

Sq. Ft. Signage:
62.33

Sq. Ft. Allowance:
TBD



SUPERIMPOSED VIEW- FRONT ELEVATION



SIMULATED NIGHT VIEW

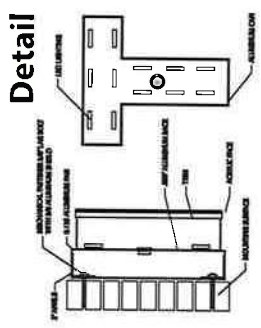
Claude Bailbe	claude@signsunlimitedusa.com
919-552-8689	www.signsunlimitedusa.com
11/20/20	UL Underwriters Laboratories, Inc. UL File #E225970

Approval Signature: *Claude Bailbe*

Please check all spelling, quantities, colors, and materials before approving

NEED SURVEY TO CONFIRM SCALE PRIOR TO MANUFACTURE

Notes:



Detail

SIGNS UNLIMITED
Communicate your identity
6801 Mount Hermon Church Rd, Building C
Durham, NC 27705

©COPYRIGHT NOTICE: Signs Unlimited expressly reserves its common law copyright and other property rights in these drawings. These drawings are not to be reproduced, changed or copied in any form or manner without written expressed permission from Signs Unlimited or its affiliates.