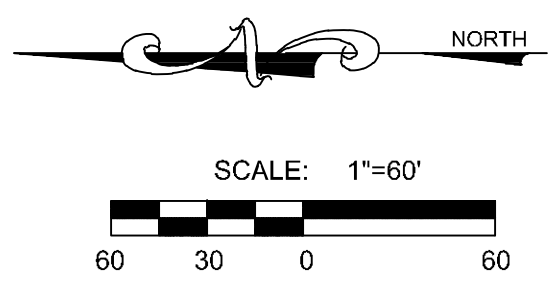
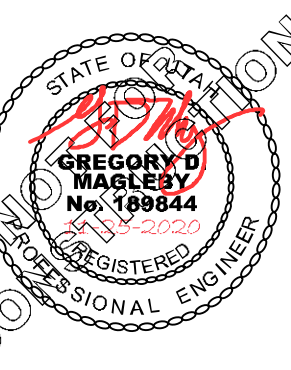




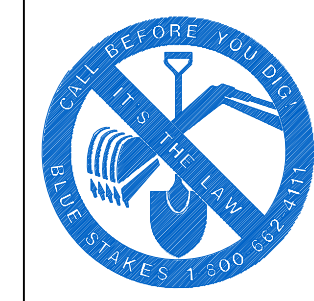
A Utah Corporation  
**ENGINEERS  
 SURVEYORS  
 PLANNERS**

3302 N. Main Street  
 Spanish Fork, UT 84660  
 Phone: 801.798.0555  
 Fax: 801.798.9393  
 office@lei-eng.com  
 www.lei-eng.com

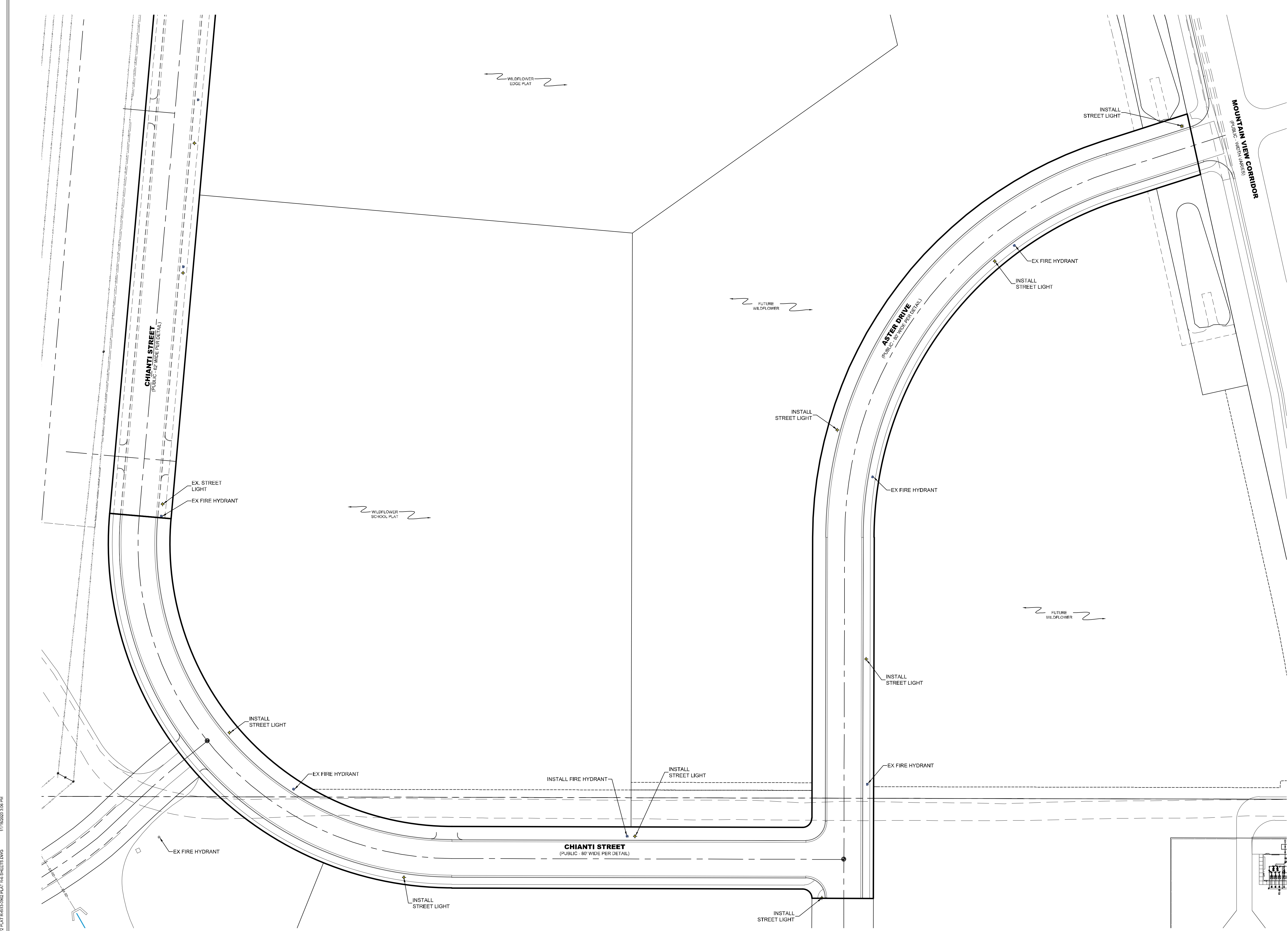


DATA TABLE	SF	LF	EA
ASPHALT	110,657		
SUB-BASE	127,250		
ROAD BASE	127,250		
CURB AND GUTTER		5,065	
TRAIL		2,706	
DRIVE APPROACH			2
ADA RAMP			3
MONUMENTS			2
STREET LIGHT (RFS)			7
STREET LIGHT (COLL)			1

**NOTE:**  
 A RIGHT-OF-WAY ENCROACHMENT PERMIT MUST BE OBTAINED FROM THE CITY OF SARATOGA SPRINGS PRIOR TO DOING ANY WORK IN THE EXISTING RIGHT-OF-WAY. CONTACT CHRIS KLINGEL AT 801-766-9793, EXT. 118.



**WILDFLOWER - VILLAGE 2 PLAT R-6**  
 CITY OF SARATOGA SPRINGS, UTAH COUNTY, UTAH  
**OVERALL SITE PLAN**



LEGEND		DETAILS
EXISTING	PROPOSED	
	BOUNDARY LINE	
	STREET CENTERLINE	
	EASEMENT LINE	
	LOT LINES	
EX-SS	SEWER PIPE	SS-1, ST-7, (*2)
	SEWER MANHOLE	SS-2, SS-2A, (*2)
	4" SEWER SERVICE	SS-3, (*5)
EX-SD	STORM DRAIN PIPE (RCP)	SD-1, ST-7, (*2)
	STORM DRAIN MANHOLE	SD-2, (*2)
	CURB INLET	SD-2
	COMBO BOX	SD-4
	4'x4' CATCH BASIN	(*2)
	3'x3' CATCH BASIN	(*2)
EX-W	INLET/OUTLET W/ GRATE	SD-5
	CULINARY WATER PIPE	DW-1, DW-2, DW-3, ST-7, (*2)
	45" PIPE ELBOW (W)	DW-2, DW-3, (*2)
	22.5" PIPE ELBOW (W)	DW-2, DW-3, (*2)
	11.25" PIPE ELBOW (W)	DW-2, DW-3, (*2)
	FIRE HYDRANT	DW-4
	34" SERVICE & METER (W)	DW-5
	PRV (W)	DW-10A, DW-10B, DW-15
	AIR-VAC VALVE (W)	DW-12, DW-15
	2" BLOW-OFF (W)	DW-13A, DW-15
	VALVE (W & SW)	(*1)*2
	TEE	DW-2, (*2)
	CROSS	DW-2, (*2)
EX-SW	SECONDARY WATER PIPE	PI-1, PI-2, ST-7, (*2)
	45" PIPE ELBOW (SW)	PI-2, (*2)
	22.5" PIPE ELBOW (SW)	PI-2, (*2)
	11.25" PIPE ELBOW (SW)	PI-2, (*2)
	1" SINGLE SW SERVICE	PI-3, PI-5A, PI-5C
	1-1/2" DUAL SW SERVICE	PI-3, PI-5B, PI-5C
	SW SERVICE TO PARKS	PI-4
	AIR-VAC VALVE (SW)	PI-8, PI-13
	BACKFLOW PREVENTER	PI-11
	2" BLOW-OFF (SW)	PI-12A, PI-13
	30" C&G (COLLECTOR)	ST-1, ST-2A
	24" C&G (LOCAL)	ST-1, ST-2C
	24" SHED C&G	ST-1, ST-2F
	SIDEWALK	ST-1
	STOP SIGN	ST-28
	STREET SIGN	ST-28
	MONUMENT	ST-29
	SPRINKLER CONDUIT	ST-9, (*3)
	FENCE	LS-14, LS-15, DET. 1 SH, D-4
	STREET LIGHT LOCAL	LP-1, LP-1B, LP-1C, LP-4, LP-6
	STREET LIGHT COLLECTOR	LP-2, LP-2B, LP-2C, LP-5, LP-6
EX-D	DITCH	
EX-FO	FIBER OPTIC	
EX-GAS	GAS	
EX-OP	OVERHEAD POWER	
	FLOW ARROW	
	CONTOURS	
	100 YEAR FLOOD ROUTE	
	MATCH LINE	
	DRIVE APPROACH	ST-4
	ADA RAMP	ST-5A, ST-5B, ST-5C, ST-5E
	TRAIL	ST-15A, ST-34, (*4)

**SHEET NOTES**

- SEE GRADING & DRAINAGE PLAN FOR GRADING REQUIREMENTS.
- SEE SIGNAGE & STRIPING PLAN FOR SIGN LOCATIONS.
- ALL STREET SECTIONS TO BE INSTALLED PER CITY STANDARDS. RESIDENTIAL STREET 59 FOOT RIGHT-OF-WAY TO BE INSTALLED PER CITY STANDARD ST-8. COLLECTOR STREET 77 FOOT RIGHT-OF-WAY TO BE INSTALLED PER CITY STANDARD ST-9. ALL RESIDENTIAL STREETS TO UTILIZE STREET PAVEMENT SECTION RESIDENTIAL ROADWAY DETAILS 1 & 2 SHEET C-907.
- THIS PLAT IS SUBJECT TO THE WILDFLOWER COMMUNITY PLAN AND SPECIFICALLY THE VILLAGE STREET TREE PLAN ON FILE WITH THE CITY OF SARATOGA SPRINGS AND IS SUBJECT TO DEVELOPMENT AGREEMENT THAT SPECIFIES THE CONDITIONS OF DEVELOPING, BUILDING AND USING PROPERTY WITHIN THIS PLAT. SEE CITY RECORDER FOR DETAILS.

**GENERAL NOTES**

- ALL UTILITIES OUTSIDE EXISTING OR PROPOSED RIGHTS OF WAY TO BE COVERED FOR ACCESS & MAINTENANCE ACCORDING TO BLANKET UTILITY EXTENSION AGREEMENT WITH SARATOGA SPRINGS CITY.

REVISIONS	
1	
2	
3	
4	
5	
6	

LEI PROJECT #:  
**2017-0012**

DRAWN BY:  
**BLS/MJV**

DESIGNED BY:  
**NKV**

SCALE:  
**1"=60'**

DATE:  
**11-25-2020**

SHEET  
**C-201**

U:\MIDWEST\PROJECTS\2020\2020-11-05\LEI\CADD\2020-11-05\11-25-2020\11-25-2020\_P&T\_T&S\_SHEETS.DWG  
 11/26/2020 2:06 PM